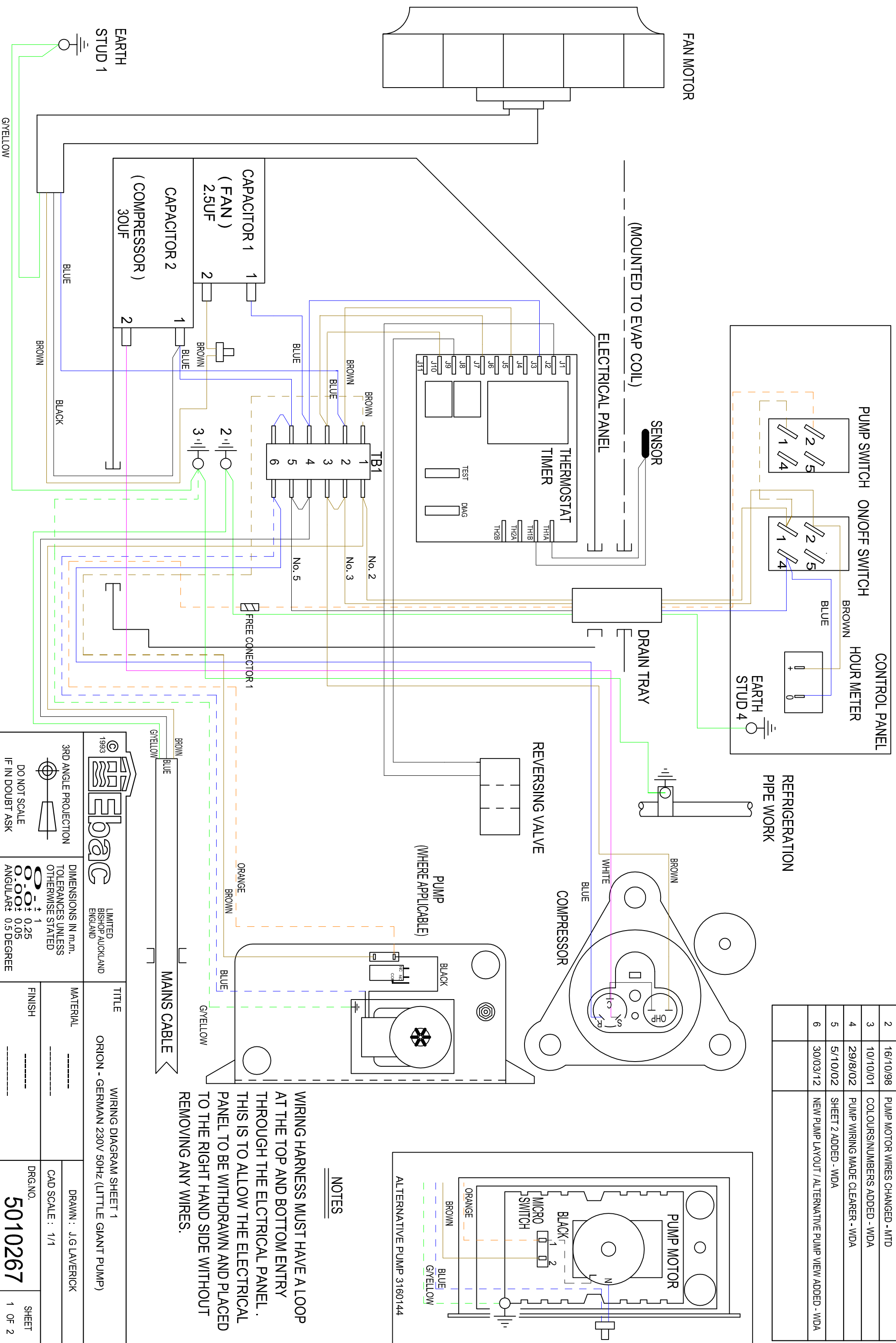
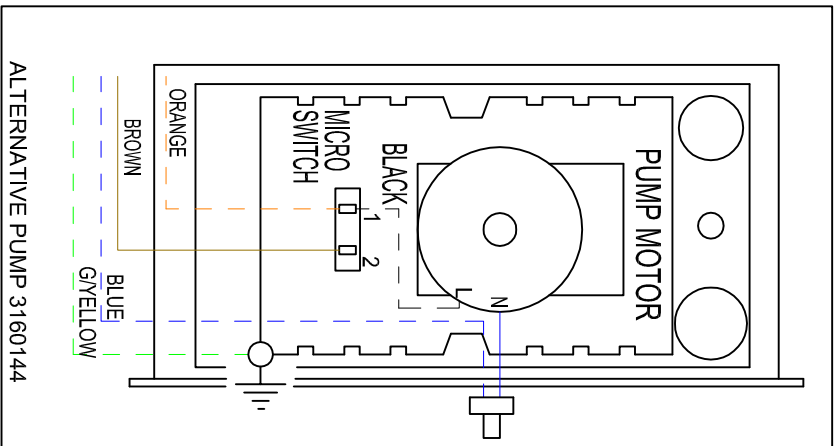


VIEWED FROM THE WIRING SIDE



ISSUE	DATE	AMENDMENTS
1	12/05/98	ORIGINAL
2	16/10/98	PUMP MOTOR WIRES CHANGED - MTD
3	10/10/01	COLORS/NUMBERS ADDED - WDA
4	29/8/02	PUMP WIRING MADE CLEARER - WDA
5	5/10/02	SHEET 2 ADDED - WDA
6	30/03/12	NEW PUMP LAYOUT / ALTERNATIVE PUMP VIEW ADDED - WDA



NOTES

WIRING HARNESS MUST HAVE A LOOP AT THE TOP AND BOTTOM ENTRY THROUGH THE ELECTRICAL PANEL. THIS IS TO ALLOW THE ELECTRICAL PANEL TO BE WITHDRAWN AND PLACED TO THE RIGHT HAND SIDE WITHOUT REMOVING ANY WIRES.

1993
LIMITED
BISHOP AUCKLAND
ENGLAND

TITLE
WIRING DIAGRAM SHEET 1
ORION - GERMAN 230V 50HZ (LITTLE GIANT PUMP)

3RD ANGLE PROJECTION
DO NOT SCALE
IF IN DOUBT ASK

DIMENSIONS IN m.m.
TOLERANCES UNLESS OTHERWISE STATED

0.00 ± 0.25
0.00 ± 0.05
ANGULAR ± 0.5 DEGREE

MATERIAL

FINISH

DRAWN: J.G LAVERICK

CAD SCALE: 1/1

DRG.NO.
5010267

SHEET
1 OF 2